



Thrifts Mead, Epping, CM16

BUTLER & STAG



**Guide Price £725,000 -  
£750,000**  
**Occupying a prime position  
 in the heart of Theydon Bois  
 village is this four bedroom  
 detached family home that  
 has been enjoyed by the  
 same family for many years.**



## Freehold

- Detached Family Home
- Four Bedrooms/Two Receptions
- Potential To Extend (sstp)
- Master With En-Suite
- Chain Free
- 120' Rear Garden

Accommodation is vast throughout with the floor space stretching just under 1800 sq.ft.

Comprising a spacious living room with doors onto the stunning rear garden, a bright and airy dining room, a kitchen/breakfast room, On the first floor there are four bedrooms with an en-suite to the master bedroom, alongside a family bathroom.

Externally, the rear garden is partly block paved and laid to lawn with borders. To the front there is off-street parking for three cars alongside access to the garage.

Theydon Bois is a charming village with a traditional green and duck pond, well regarded primary school, a range of shops, pubs and restaurants, cricket, tennis and golf clubs. Transport links to London are excellent with the central line tube station within ten minutes walk and easy access to the M25 and M11.

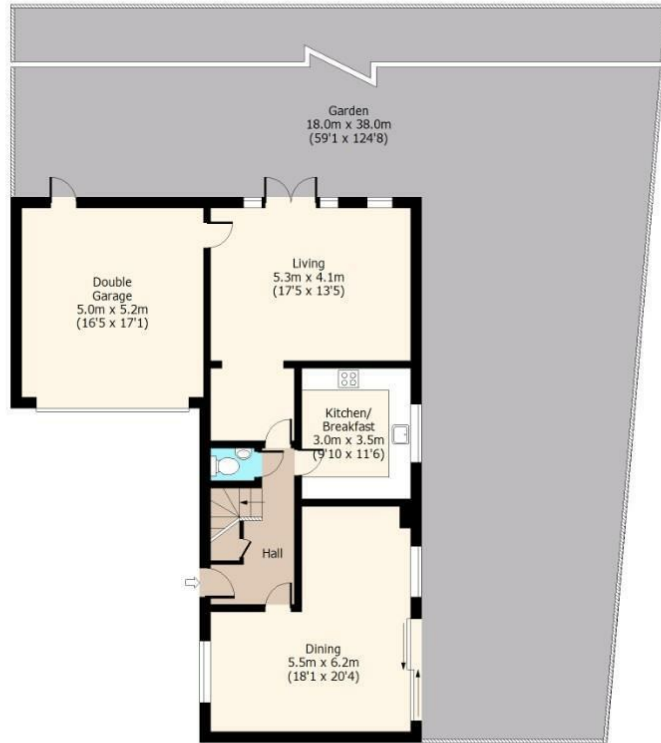




Thriffs Mead,

Ground Floor

Approx. 79.24 Sq. meters (853 Sq. feet)  
(Excluding Garage)



First Floor

Approx. 57.78 Sq. meters (622 Sq. feet)



Total area: approx(Including Garage) 163.04 Sq. meters (1755 Sq. feet)  
Total area: approx(Excluding Garage) 137.02 Sq. meters (1475 Sq. feet)  
For illustration purposes only - not to scale  
www.jpapulus.com

IMPORTANT NOTICE - These particulars have been prepared in good faith and they are not intended to constitute part of an offer or contract. We have not performed a structural survey on this property and the services, appliances an specific fittings have not been tested. All photographs, measurements, floor plans and distances referred to are given as a guide and should not be relied upon.

**BUTLER & STAG**

☎ 01992 667666

🏠 4 Forest Drive, Theydon Bois, Essex, CM16 7EY

✉ theydon@butlerandstag.com

[www.butlerandstag.uk](http://www.butlerandstag.uk)